



Vehicle
Certification
Agency

VCA Headquarters
1 The Eastgate Office Centre
Eastgate Road
Bristol, BS5 6XX
United Kingdom

T +44 (0)300 330 5797
E enquiries@vca.gov.uk

www.vehicle-certification-agency.gov.uk

06 July 2021

To Whom It May Concern,

SUBJECT: UK N1 and N2 Enhancement Scheme

MANUFACTURER: Locks 4 Vans

The Vehicle Certification Agency hereby confirms that the information contained in the attached stamped documentation relates to Locks 4 Vans.

Fitment of the locks, as detailed on the attached pages, when fitted in accordance with the manufacturer's instructions, will mean that vehicles will comply with the requirements pertaining to External Projections of Cabs of the UK N1 and N2 Enhancements Scheme, dated from 18 February 2013.

Yours faithfully,

Elizabeth Durell
Principal Type Approval Engineer
E-mail: Elizabeth.durell@vca.gov.uk



N1 & N2 Enhancement Scheme

21/06/2021

Slamlock, Deadlock, Replock and Handle Shield Kits manufactured for installation as supplementary vehicle security locks by Locks 4 Vans Ltd, designated as A, S, T, V Series and Sentinel Deadlocks and A, S, T, V Series and Sentinel series Slamlocks have been deemed to be compliant with the requirements of the N1 & N2 Vehicle Enhancement Scheme subject to the following conditions.

- i. The correct vehicle door specific kit(s) have been used.
- ii. The installation conforms to the supplied vehicle door specific instructions in association with the L4V General Installation guide.
- iii. Passenger Doors: The projection of the front face of the Cylinder must not exceed 5mm from the external door skin surface of the Host door (See Photo 1). Should the project exceed this measurement then a shorter Cylinder MUST be used.
- iv. Side Load Doors: The projection of the front face of the Cylinder must not exceed 8mm from the external door skin surface of the Host door (See Photo 1). Should the project exceed this measurement then a shorter Cylinder MUST be used.
- v. Fitment does not affect the original vehicle latch and lock systems in a way that affects compliance with the provisions of item 06 of the N1 IVA Manual



Photo 1

A = PASSENGER DOORS

5 mm Maximum Projection

SIDE LOAD DOORS

8 mm Maximum Projection

Locks 4 Vans

Deadlock



Slamlock



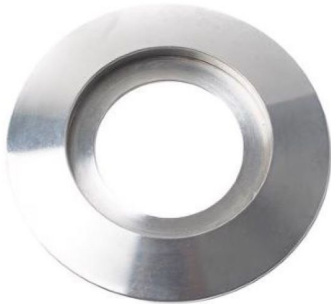
Ford Transit Replacement Lock



Ford Transit Custom Replacement Lock



Replacement Bezel



Repair Plate



Handle Shield

